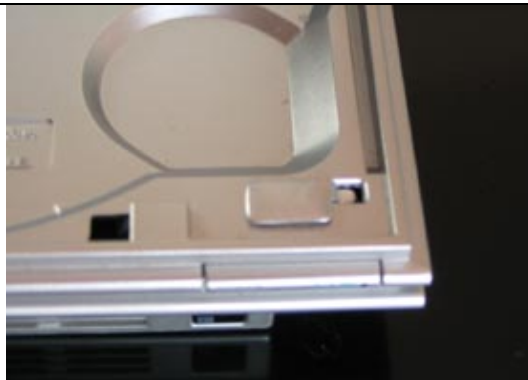




Here you can see all 3 Slimtool MK2 ( Magic keys 2 ).  
There is a sticker on the rear site of each Slimtool MK2.



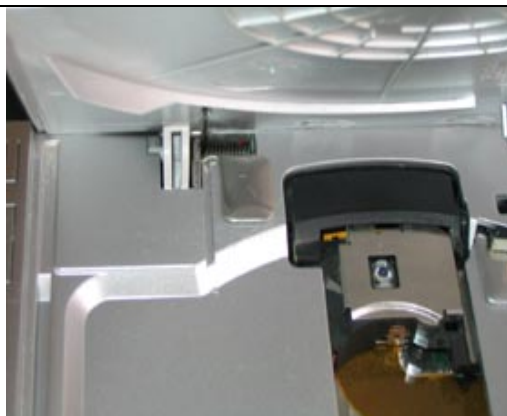
On this picture you can see the console front view and the situation of each Slimtool MK2.



Stick component 1 in the hole over the on/reset button of your console, like on the photo.



Now move the disk break to the right and hold it. Stick component 2 to the left site of the disk break, as shown.



And last, put a Game or Swap Magic disc into your PlayStation, push the On/Reset button and insert component 3 into the 1mm gap situated in the back left site of your console.  
When component 3 was inserted correctly the disc automatically starts to rotate!  
If the disc does not rotate after you have inserted component 3 move the component a little bit to the left and to the right until the disc rotates!

To install tool 3 – you can watch this Video ,but its so easy without.